



GTL922 FS

SmartWay
Verified



For Trucks, Trailer Position



Long Haul

SmartWay Verified Long Haul Trailer Tire



Features

Benefits



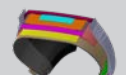
Four straight groove design

Enhanced driving stability and effective water evacuation properties



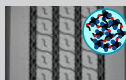
Optimized footprint

Increased performance for wet grip



Continuous shoulder rib design

Provides excellent resistance to irregular wear



Special tread compound

Reduced rolling resistance and improved fuel economy

Tire Size	Item Code	PR	LR	LI/SR	Approved Wheel	Allowed Wheel	Max Load Single	Max Load Dual	Section Width	Static Loaded Radius	Overall Diameter	Tread Depth	RPM	Weight
					mm	mm	(kg@kPa)	(kg@kPa)						mm
11R22.5	100EV1783Q	14	G	144/142 L	210	191	2801@724	2649@724	279	490	1054	11	501	51
255/70R22.5	100EV1570Q	16	H	140/137 L	191	210	2499@827	2300@827	254	434	930	11	568	40
295/75R22.5	100EV1191Q	14	G	144/141 L	229	210	2801@758	2574@758	297	472	1013	11	521	47
11R24.5	100EV1448Q	14	G	146/143 L	210	191	2998@724	2724@724	279	516	1105	11	478	55
285/75R24.5	100EV2120Q	14	G	144/141 L	210	-	2801@758	2574@758	282	493	1049	11	503	50

PR Ply Rating LR Load Range LI Load Index SR Speed Rating RPM Revolutions Per Mile

Giti manufactures SmartWay Verified Technologies. Learn more at epa.gov/smartway.

Product details given for information only. Giti reserves the right to modify details of products and services at any time and without notice.



COMMERCIAL TRUCK TIRES